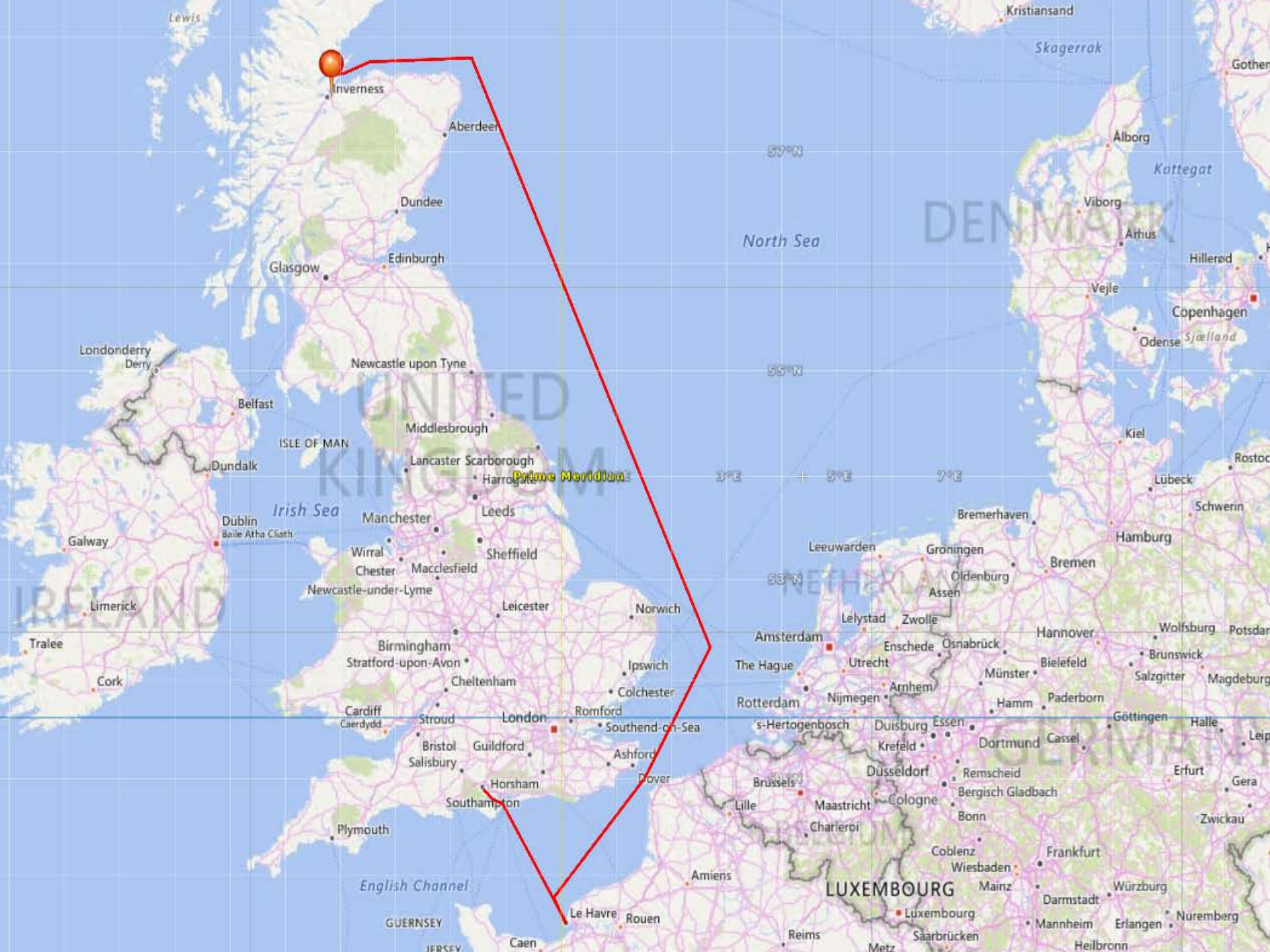


United States v. Princess Cruises, Ltd.

Government's Exhibits in Support of the Joint Factual Statement

1. Map of Caribbean Princess voyage August 26-27, 2013.
2. Display of Caribbean Princess engine room computer on 08.26.13 showing a discharge in excess of the capacity of the OWS.
3. Sounding sheets for 08-26-13 by four different crew members documenting the drop of Oilers showing drop in the Clean Bilge Tank.
4. Government diagram of the standing pipe method of bypassing used in 2013.
5. Government schematic diagram of the oily bilge system on the Caribbean Princess.
6. Before and after photographs of the carbon filter pump showing the bypass pipe in place on 08-26-13 and removed on 08-28-13.
7. Before and after photographs of the carbon filter pump showing the bypass in place on 08-26-13 (left) and during U.S. examination on 03-08-14 (right).
8. Top of graywater tank #11 adjacent to the carbon filter pump.
9. Depiction showing how a flexible hose was used to transfer from the standing bypass pipe to the top hatch of graywater tank #11.
10. Interior of carbon filter discharge pipe when disassembled at the government's request on March 8, 2014.
11. Carbon filter tanks and carbon filter pump (lower left) showing discharge pipe on top of the pump before its removal.
12. Threaded bypass pipe and valve used prior to the installation of the standing bypass pipe.
13. Interior of threaded bypass pipe when disassembled at the government's request on March 8, 2013.
14. Depiction showing how a flexible hose was used to transfer from the threaded bypass pipe to the top hatch of graywater tank #11.
15. Depiction showing how a portable pump and flexible hoses were used to transfer from the transfer from the Clean Bilge Tank to the top hatch of graywater tank #11.
16. Static Oily Water Separator and pollution prevention placards.
17. Seawater valve opened during operation of the Static Oily Water Separator.
18. Pollution prevention placards mounted on the Static Oily Water Separator.
19. Pollution prevention placard mounted in the engine room.
20. Stub pipes found on the graywater system by Princess' replacement Chief Engineer.
21. Photos of the Caribbean Princess, Star Princess , Grand Princess, Coral Princess , Golden Princess.



UNITED KINGDOM
Prime Meridian

DENMARK

NETHERLANDS

LUXEMBOURG



Graph from Caribbean Princess Engine Control Room

WATCH 00 to 04DATE 8-26-13

COUNT F.O.	MOD 1-2 560743		MOD 3-4 907035		MOD 5-6 065368	
COUNT F.O. MODULE BOILER	FWD 262291		AFT 978629			
EVAPORATORS	1 210302		2 099753		3 951828	
AUTOFILTER F.O.	1-2 68812		3-4 57417		5-6 65526	
AUTOFILTER L.O.	1 086263	2 084544	3 074890	4 088086	5 085316	6 084896
OIL BILGE TK SOUND	97		SLUDGE TK SOUND 66			
INTERMEDIATE SLUDGE TK SOUND	2270		CLEAN BILGE		120	

WATCH 4-8DATE AUG.-26

COUNT F.O.	MOD 1-2 567108		MOD 3-4 919888		MOD 5-6 075248	
COUNT F.O. MODULE BOILER	FWD 262292		AFT 978874			
EVAPORATORS	1 210302		2 099828		3 951918	
AUTOFILTER F.O.	1-2 68814		3-4 57418		5-6 65527	
AUTOFILTER L.O.	1 86267	2 84548	3 77893	4 88089	5 85320	6 84900
OIL BILGE TK SOUND	98		SLUDGE TK SOUND 67			
INTERMEDIATE SLUDGE TK SOUND	2200		CLEAN BILGE		115	

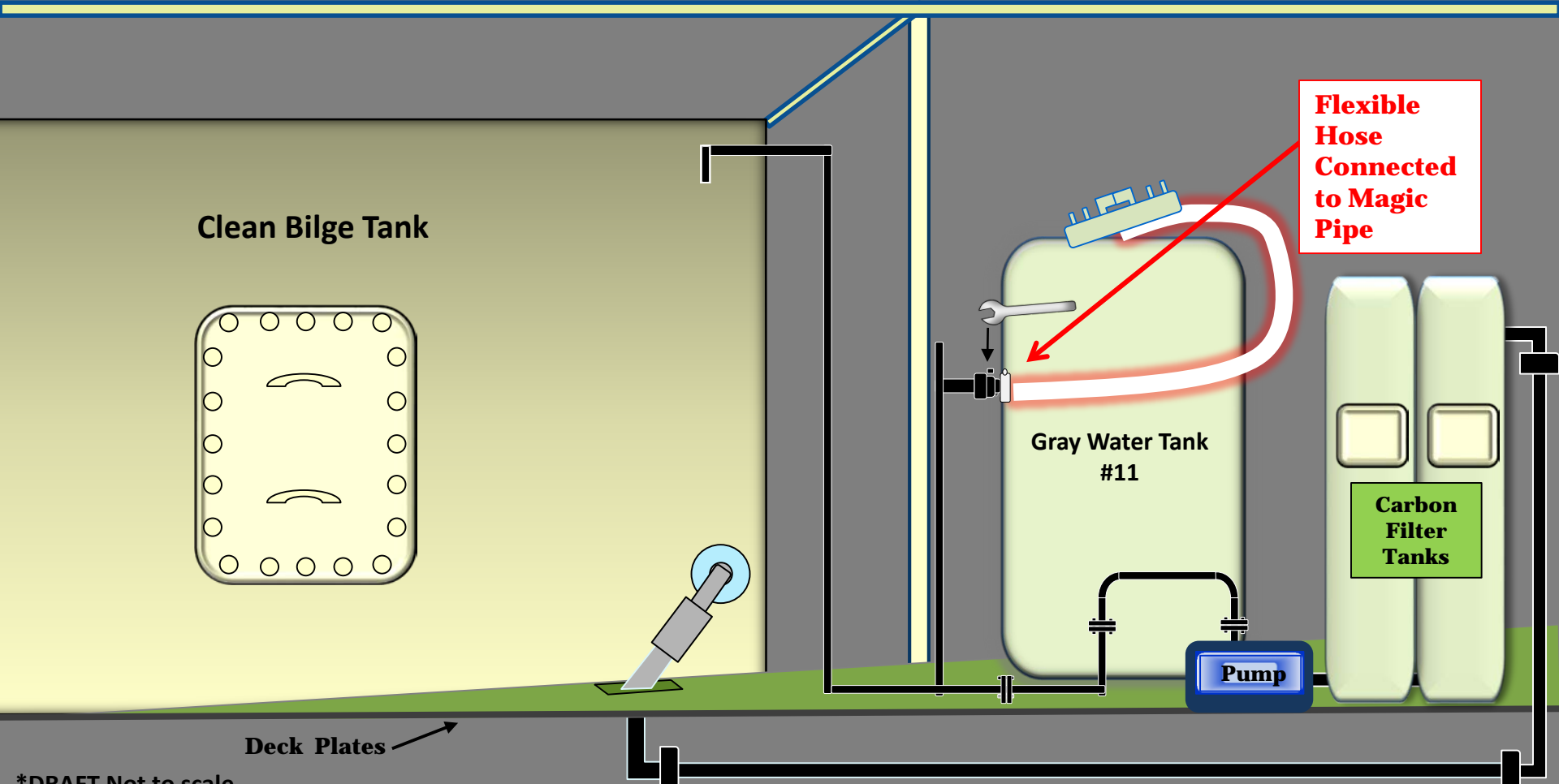
WATCH 8-12DATE 26-8-13

COUNT F.O.	MOD 1-2 574288		MOD 3-4 934324		MOD 5-6 086435	
COUNT F.O. MODULE BOILER	FWD 262292		AFT 979145			
EVAPORATORS	1 —		2 99922		3 952010	
AUTOFILTER F.O.	1-2 68816		3-4 57420		5-6 65529	
AUTOFILTER L.O.	1 86270	2 84552	3 77897	4 88093	5 85325	6 84900
OIL BILGE TK SOUND	98		SLUDGE TK SOUND 57			
INTERMEDIATE SLUDGE TK SOUND	227		CLEAN BILGE		44	

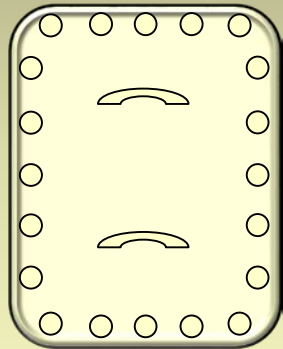
WATCH 12 to 16DATE 8-26-13

COUNT F.O.	MOD 1-2 582245		MOD 3-4 950266		MOD 5-6 098406	
COUNT F.O. MODULE BOILER	FWD 262322		AFT 979386			
EVAPORATORS	1 —		2 100019		3 952091	
AUTOFILTER F.O.	1-2 68816		3-4 57422		5-6 65531	
AUTOFILTER L.O.	1 086274	2 084555	3 077900	4 088096	5 085326	6 084907
OIL BILGE TK SOUND	110		SLUDGE TK SOUND 59			
INTERMEDIATE SLUDGE TK SOUND	2270		CLEAN BILGE		44	

Caribbean Princess Bypass Method Used in 2013



Clean Bilge Tank



**Flexible
Hose
Connected
to Magic
Pipe**

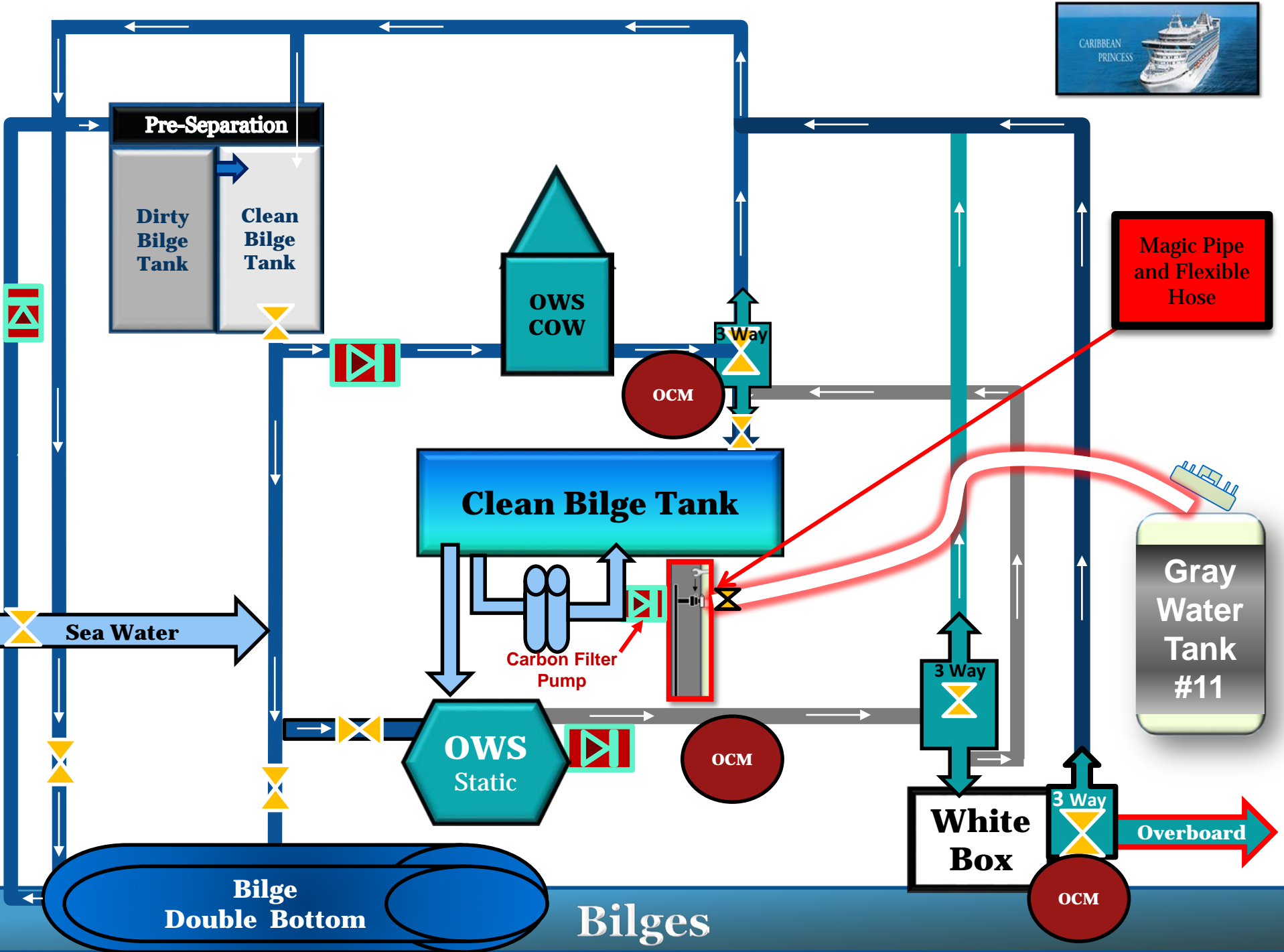
Gray Water Tank
#11

**Carbon
Filter
Tanks**

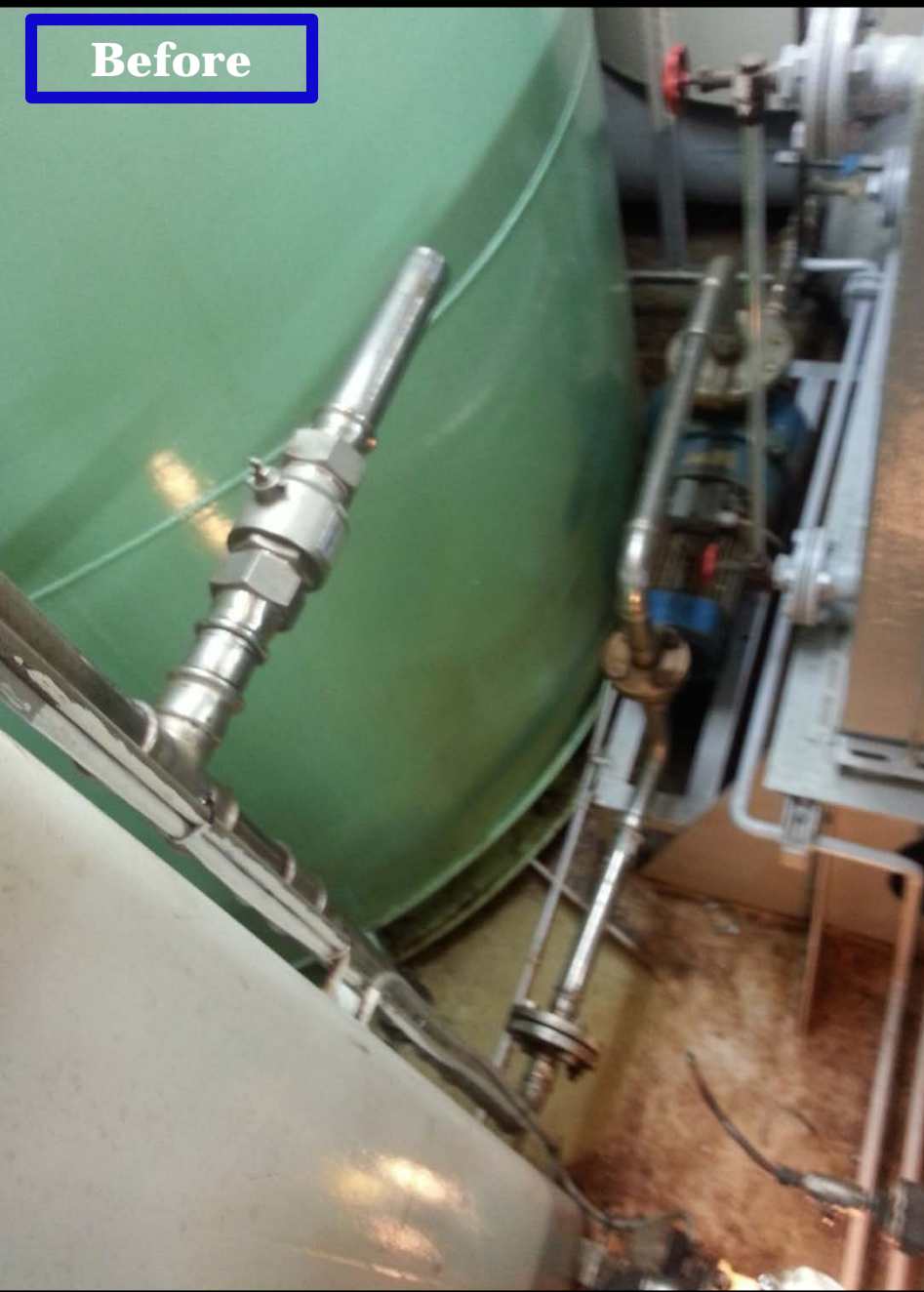
Pump

Deck Plates

*DRAFT Not to scale.

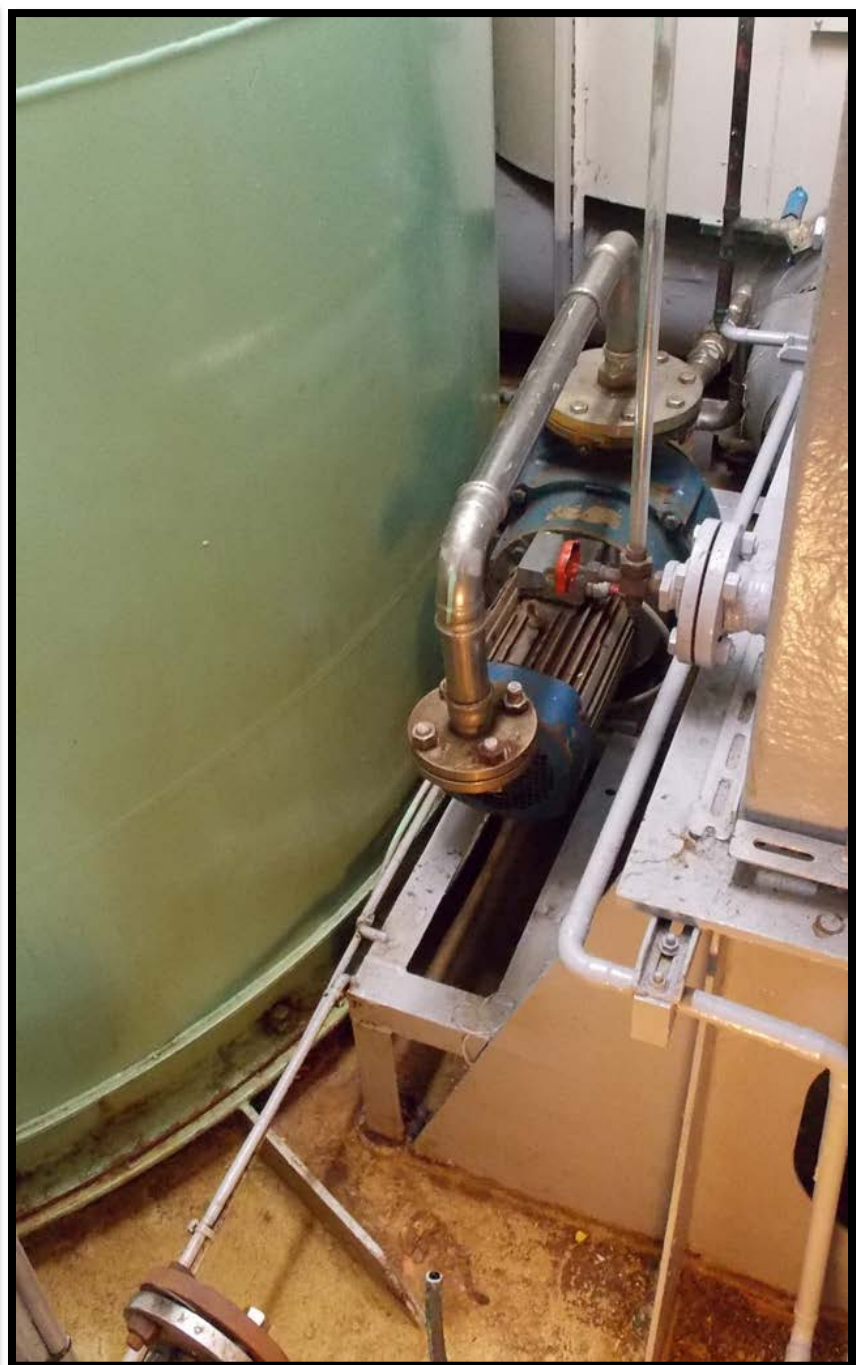
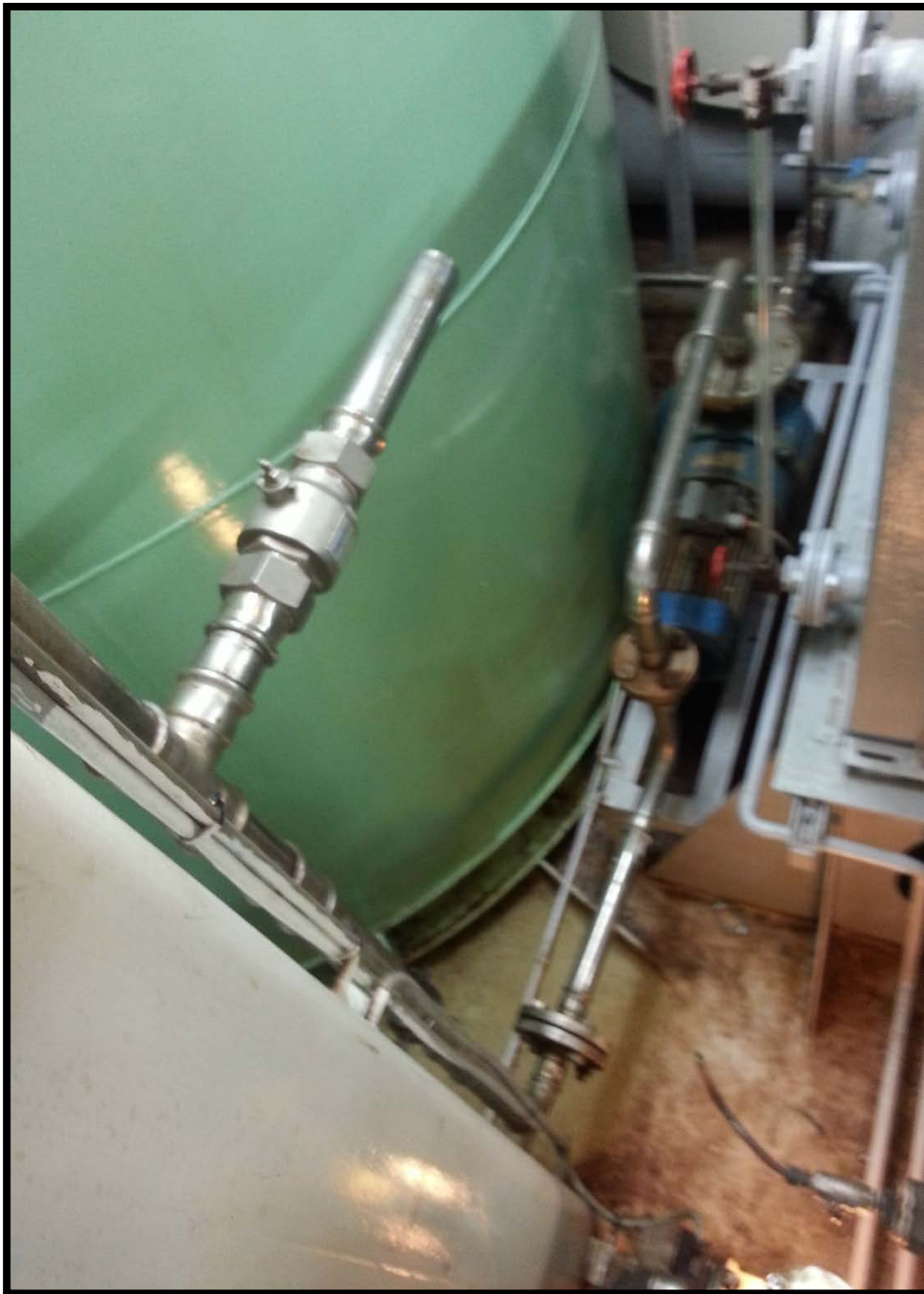


Before



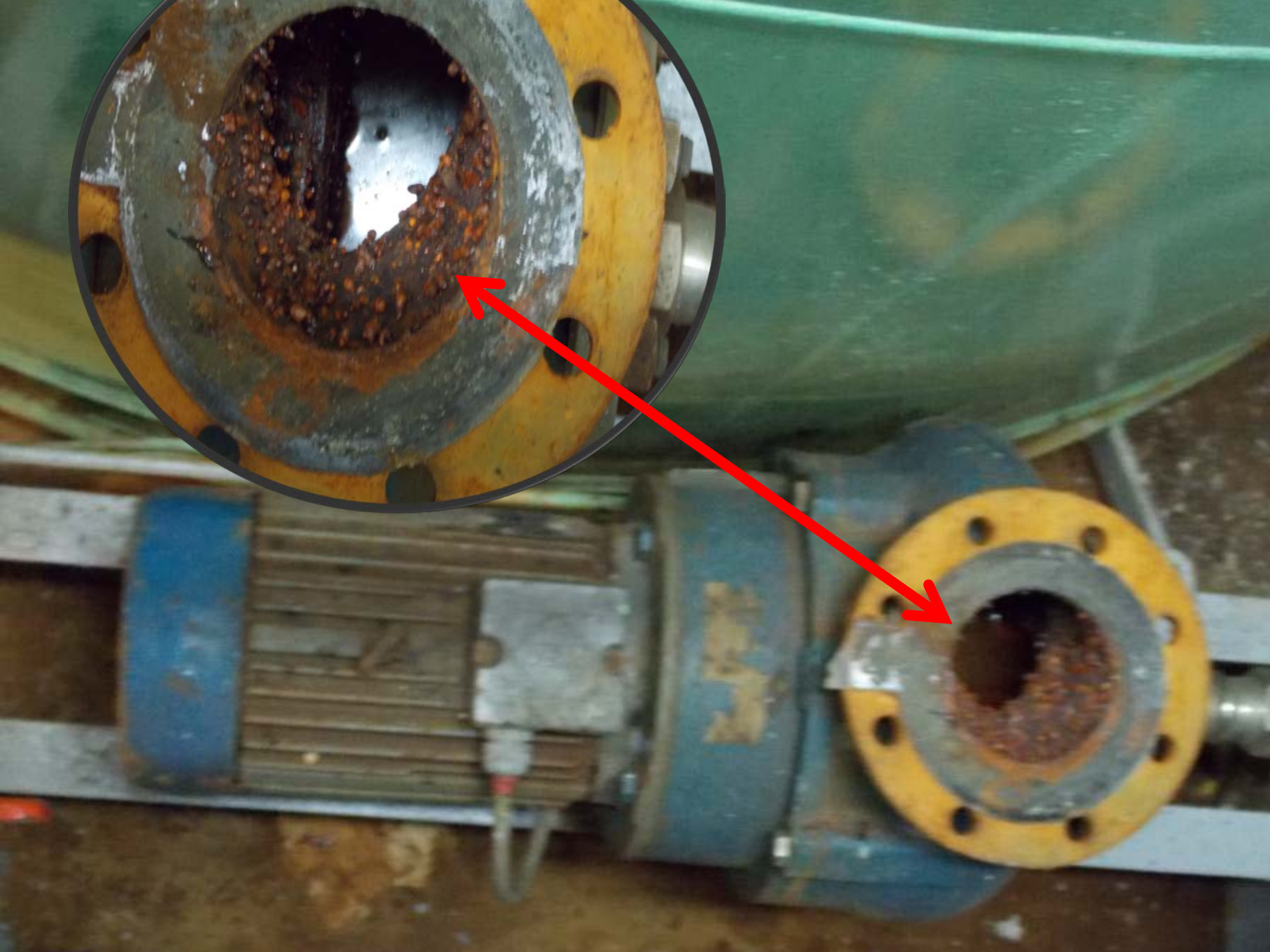
After



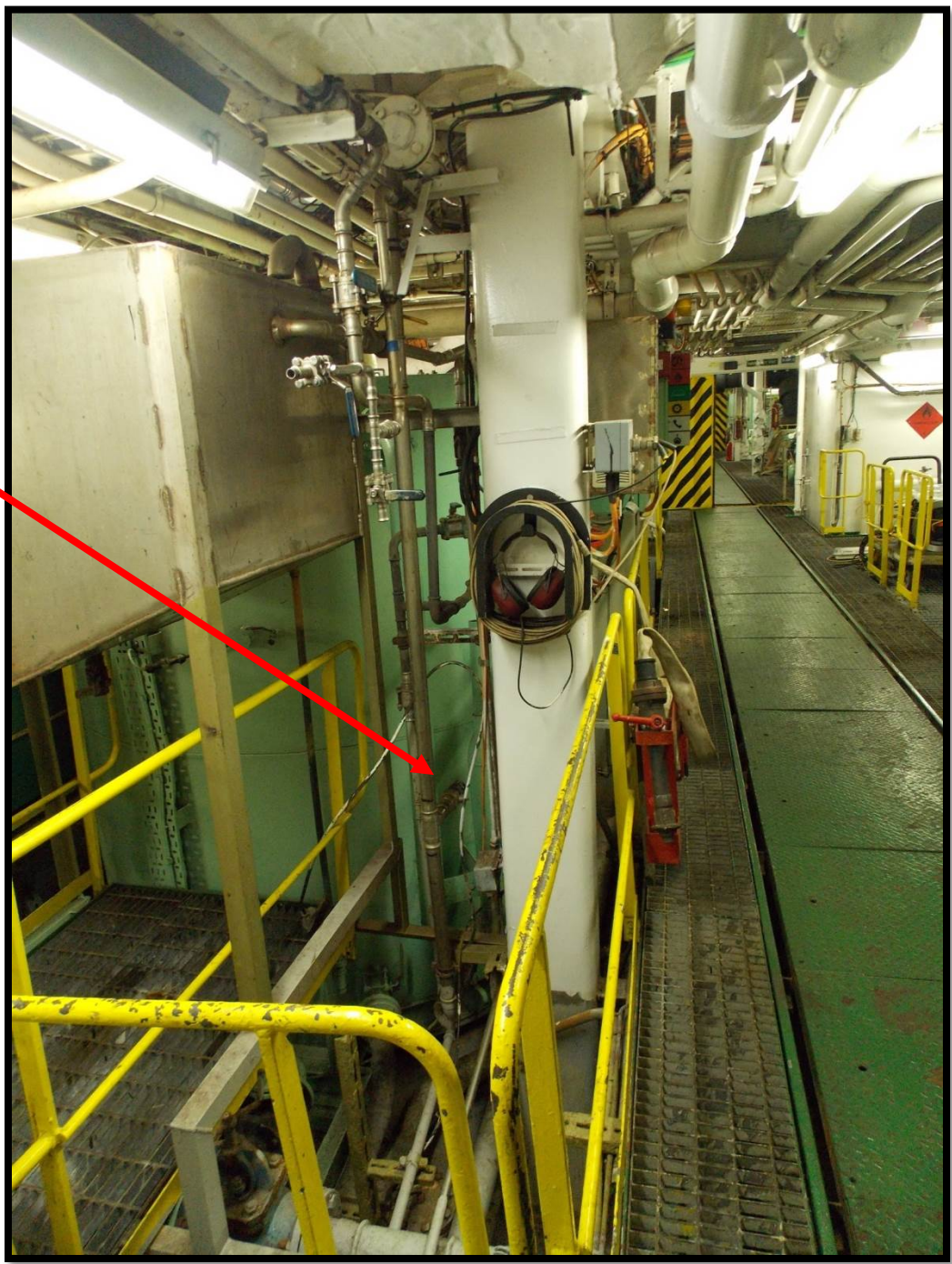




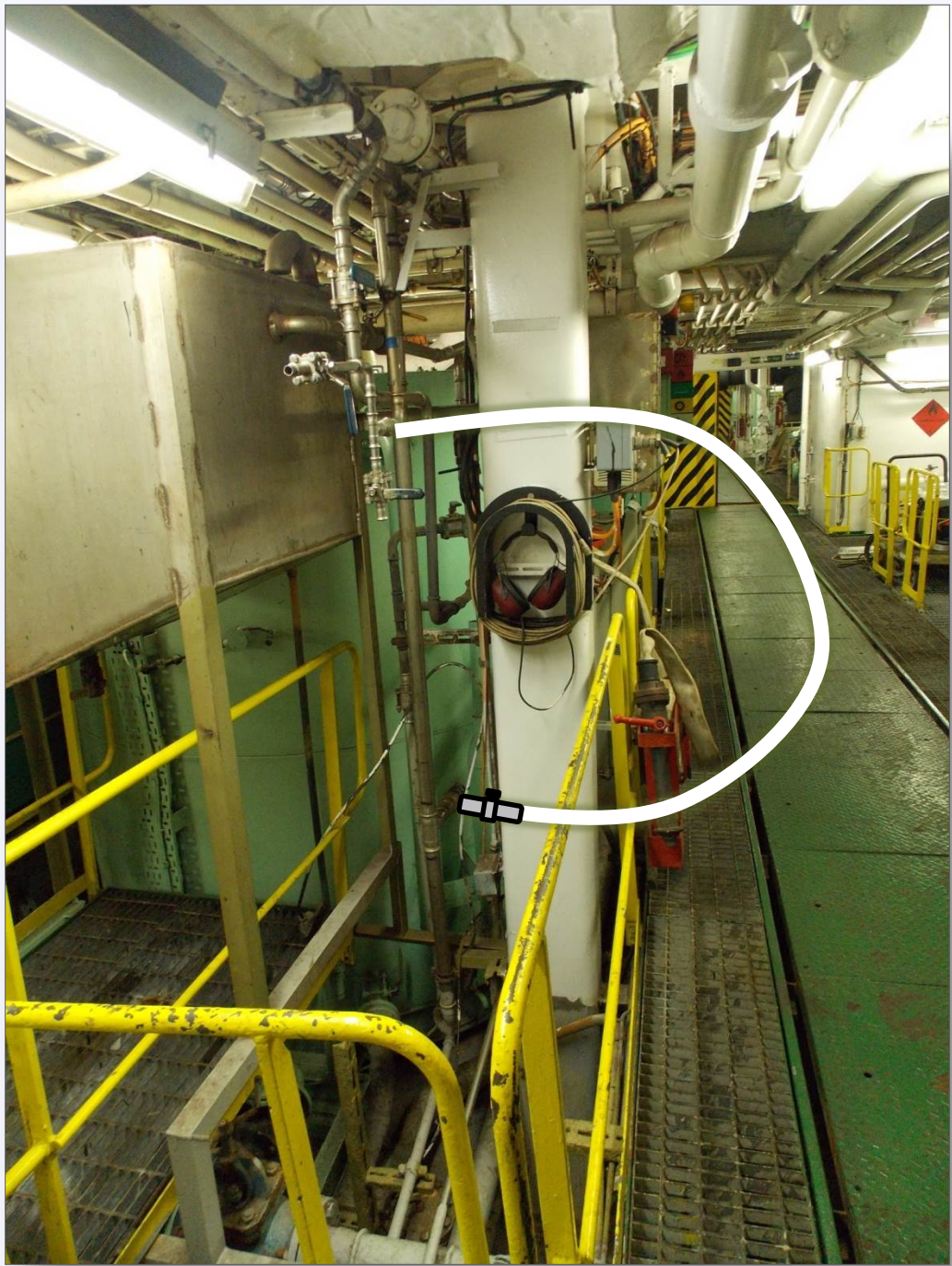


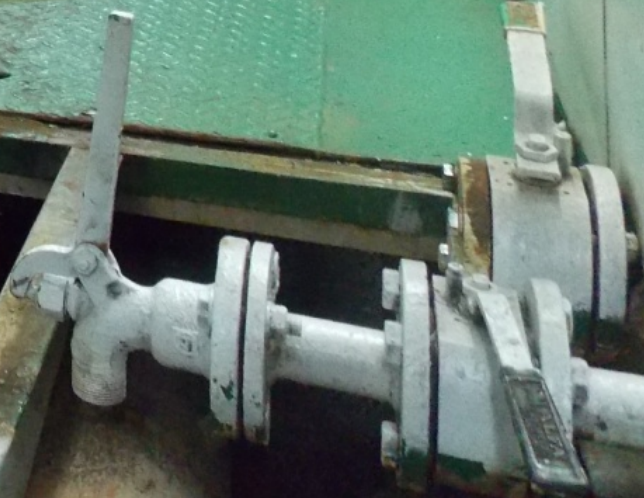
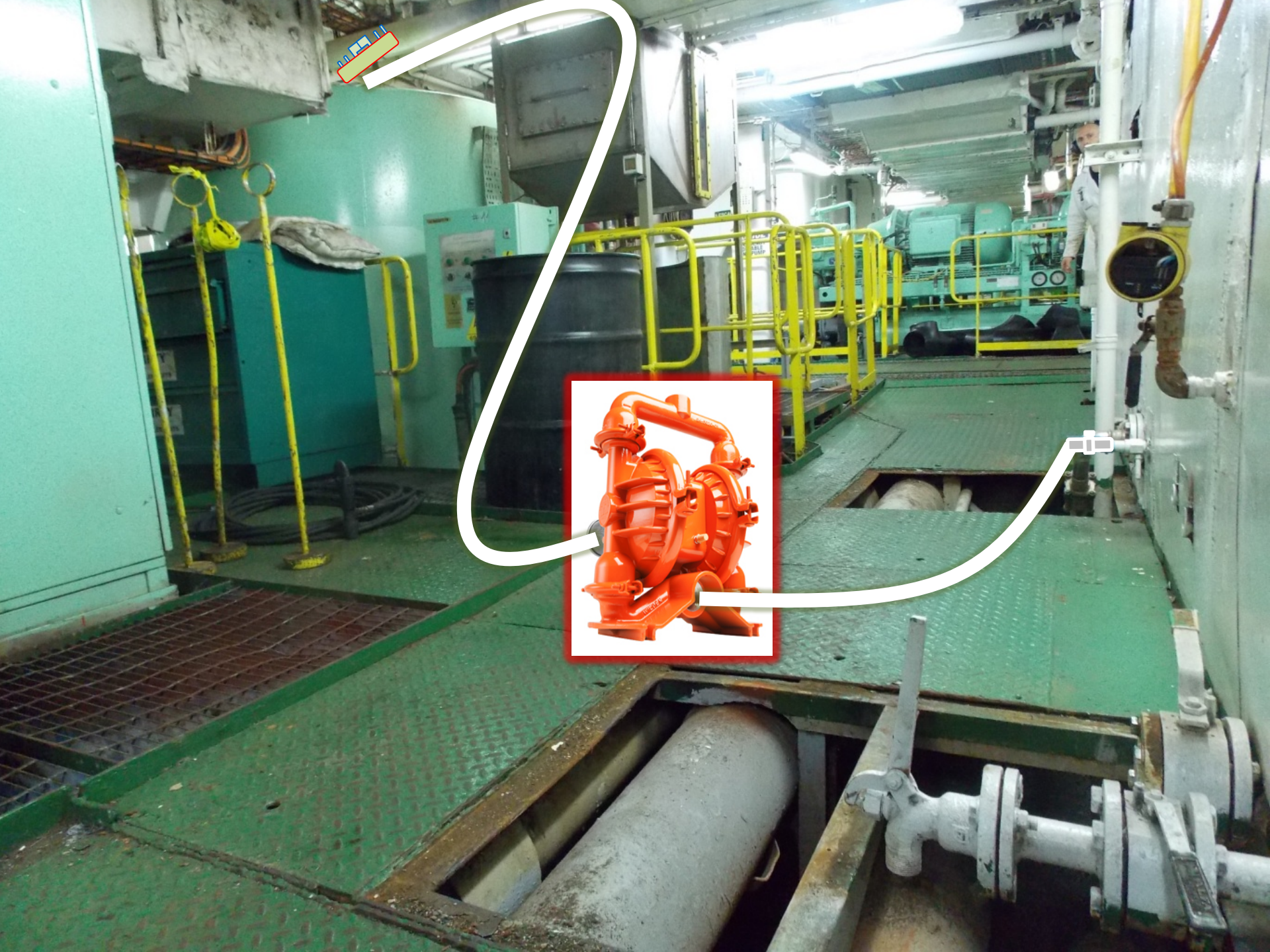












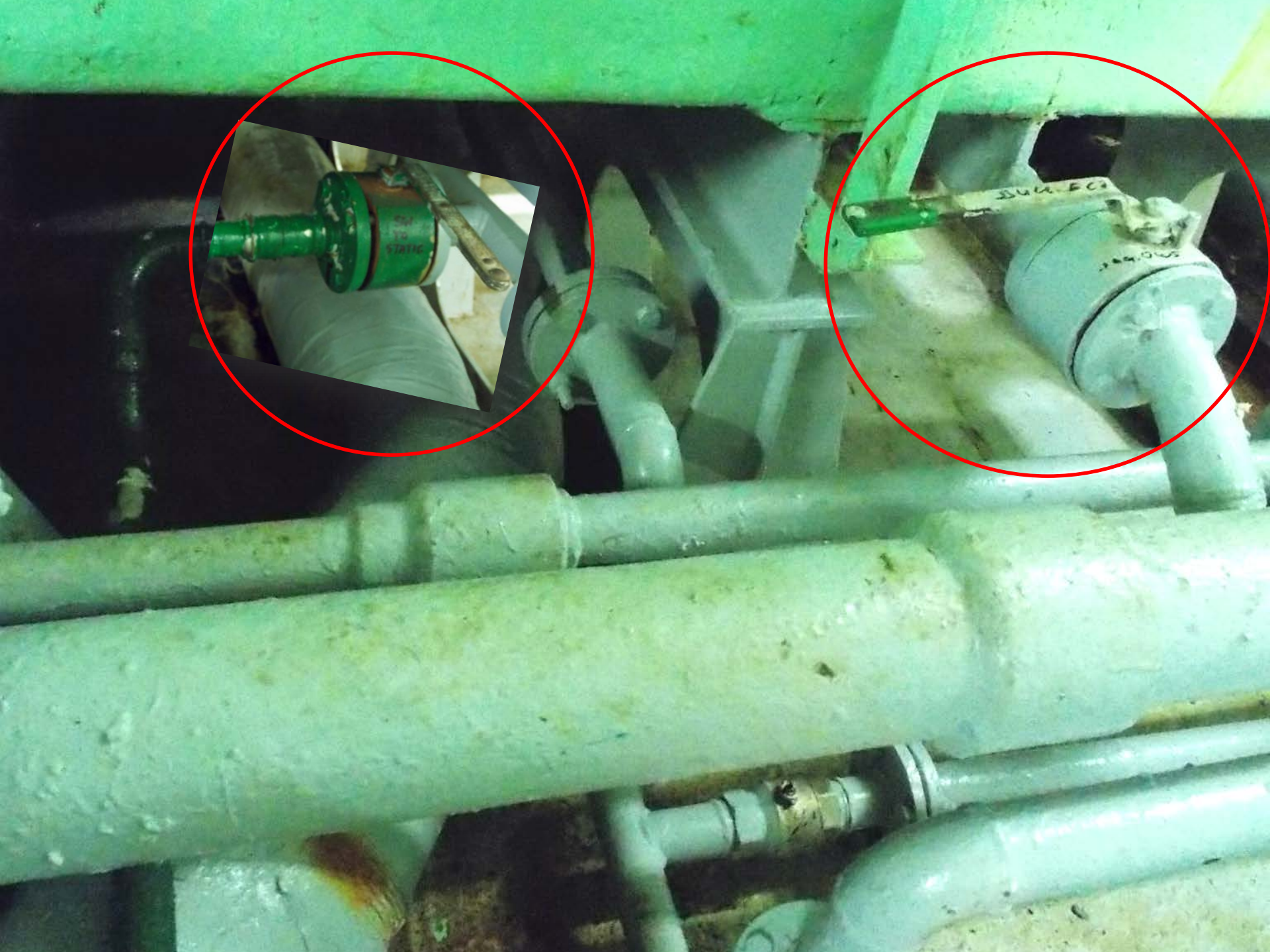


WARNING

DISCHARGE OF OIL PROHIBITED

KWB Water Technology

OWS



WARNING

Carnival Corporation is committed to environmental protection and compliance. Violation of Environmental law, regulations, policy and/or procedures may lead to individual and corporate consequences. Employees are responsible for preventing and for reporting all Environmental incidents and near incidents. Each employee is responsible and accountable for their individual actions. Employees violating law, regulations, policy and/or procedures will be disciplined in severity according to the violation which may include suspension or termination and civil and criminal sanctions. Disregard for this statement will result in serious consequences to the individual.

PW0273N

www.marineinsignia.com

DISCHARGE OF OIL PROHIBITED

The Federal Water Pollution Control Act prohibits the discharge of oil or oily waste into or upon the navigable waters of the United States, or the waters of the contiguous zone, or which may affect natural resources belonging to, appertaining to, or under the exclusive management authority of the United States. If such discharge causes a film or sheen upon or discoloration of the surface of the water or causes a sludge or emulsion beneath the surface of the water. Violators are subject to a penalty of \$5,000 (33 CFR 155.450)

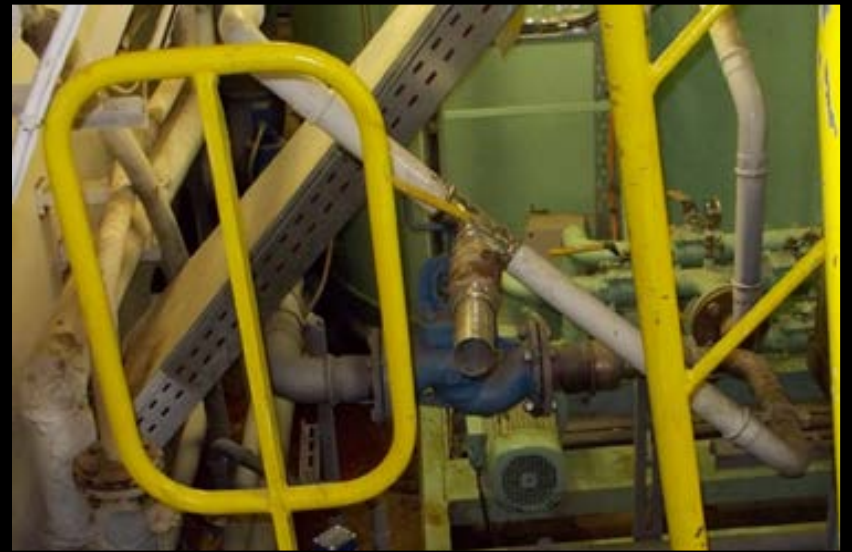
The person in charge of a vessel or facility must immediately report any discharge of oil or hazardous substance to the National Response Center toll free at (800) 424-8802. Conviction of failure to make this notification immediately upon discharge can result in a \$10,000 fine or 1 year imprisonment, or both.

(33 CFR 151-15(d); 33 CFR 153.203; 153.205)

DISCHARGE OF OIL PROHIBITED

The Federal Water Pollution Control Act prohibits the discharge of oil or oily waste into or upon the navigable waters of the United States, or the waters of the contiguous zone, or which may affect natural resources belonging to, appertaining to, or under the exclusive management authority of the United States, if such discharge causes a film or discoloration of the surface of the water, or causes a sludge or emulsion beneath the surface of the water.

Violators are subject to substantial civil penalties and or criminal sanctions including fines and imprisonment.





Caribbean Princess



Star Princess



Grand Princess



Coral Princess



Golden Princess